



Yakama Nation Fisheries

Klickitat River Coho Program



Klickitat River U.S. v OR Coho Program

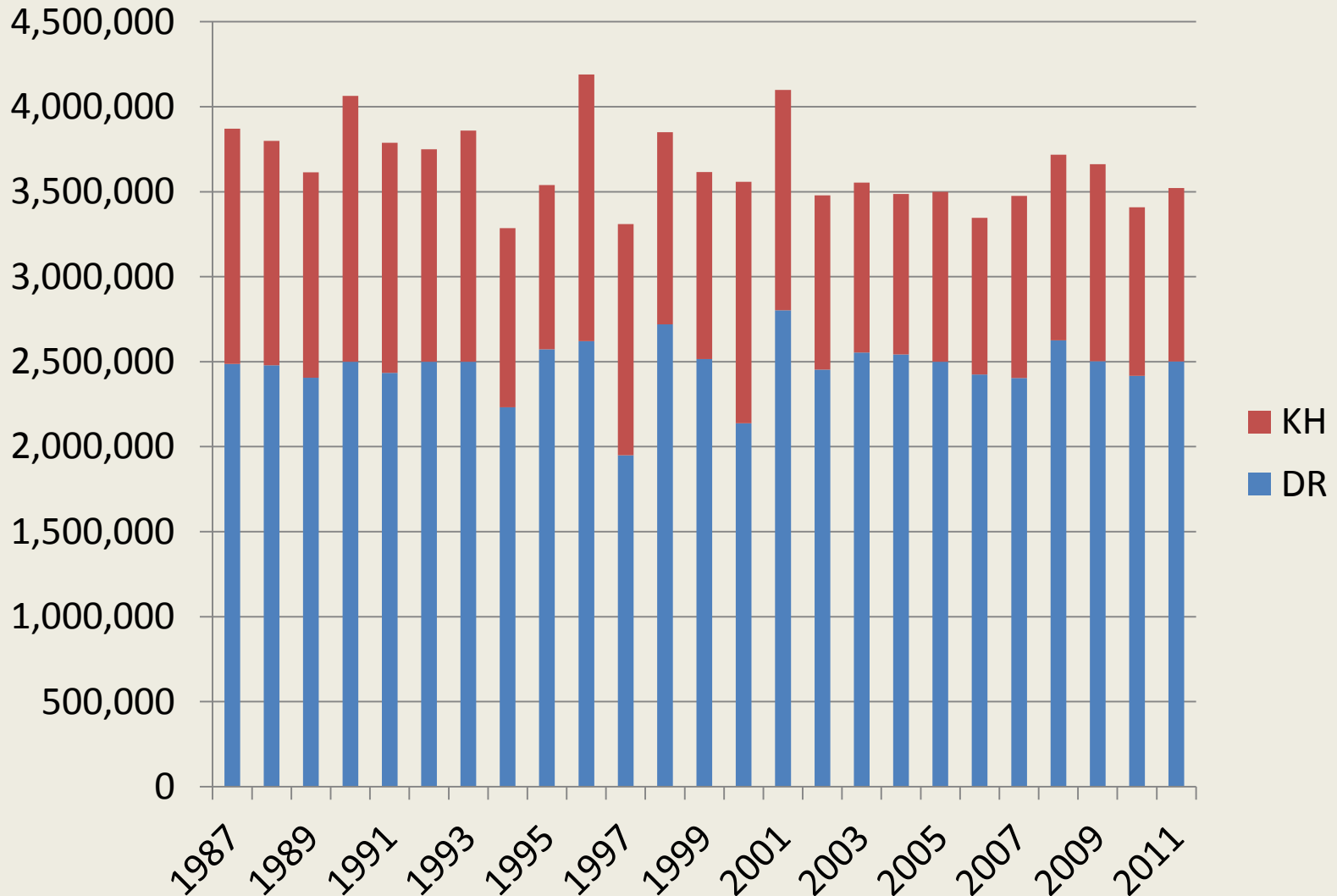
1.0m yearling on-station (Lewis)

2.5m direct release (Washougal)

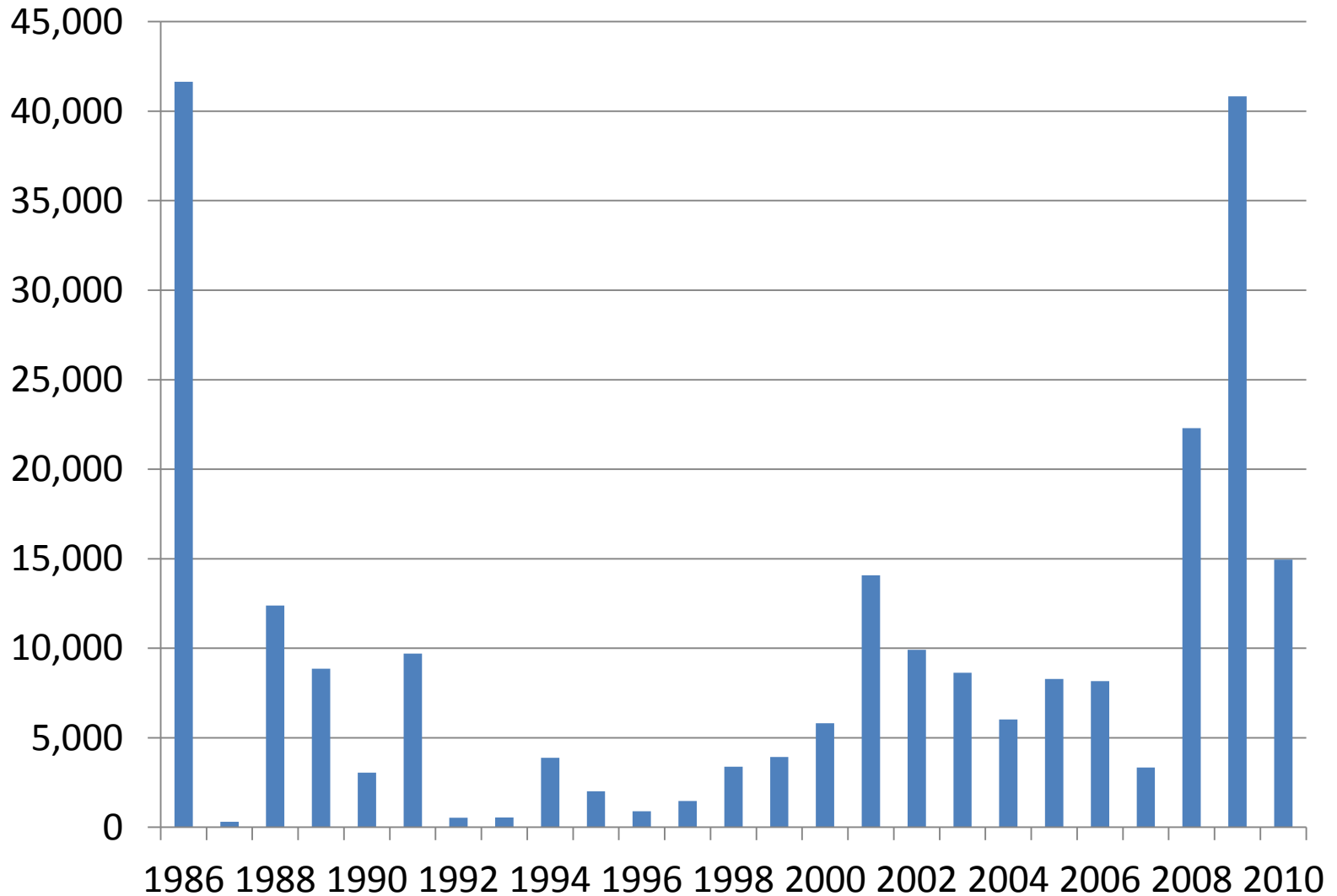


Klickitat River

Annual Coho Releases (smolts)

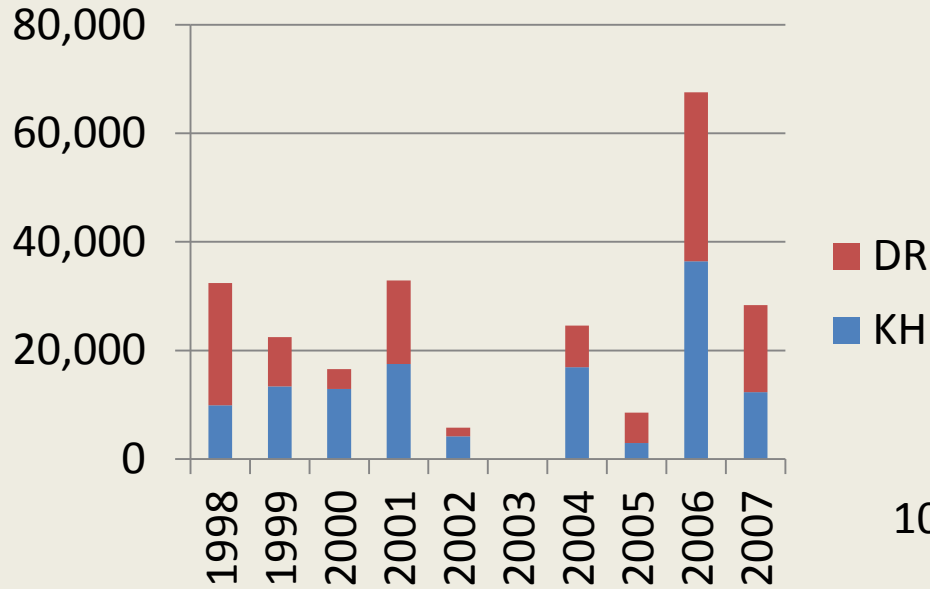


Klickitat River Mouth Annual Coho Returns (adults+jacks)

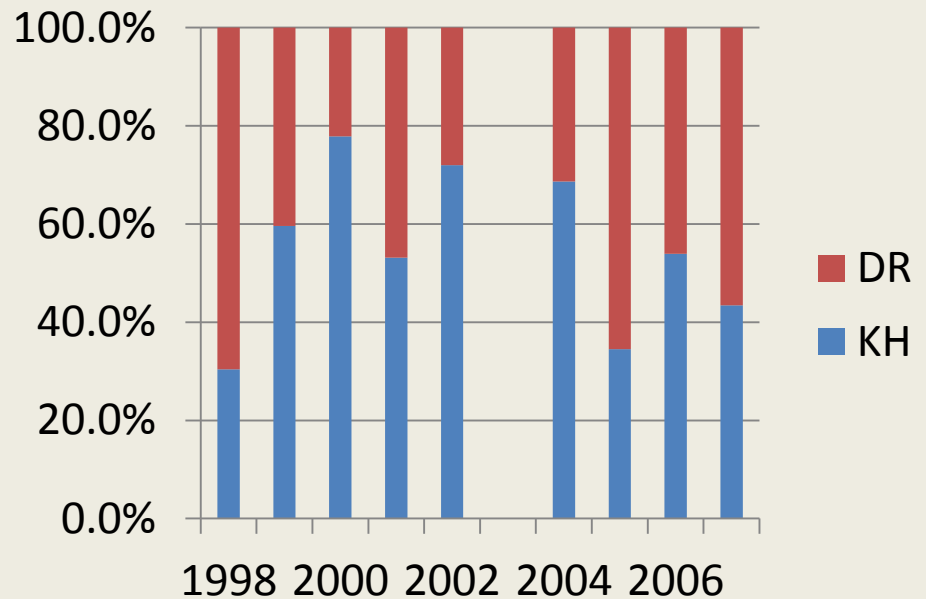


Klickitat River

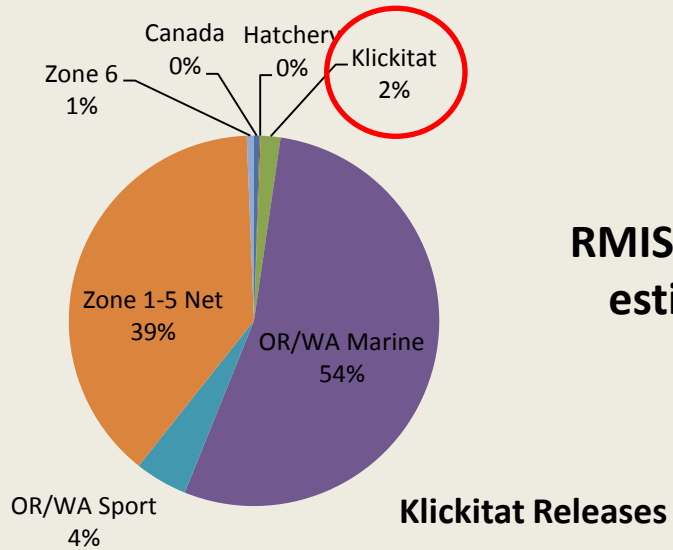
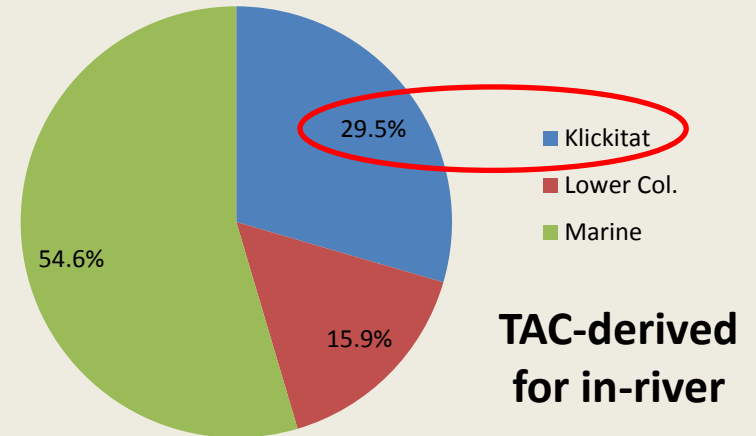
Annual Coho Harvest



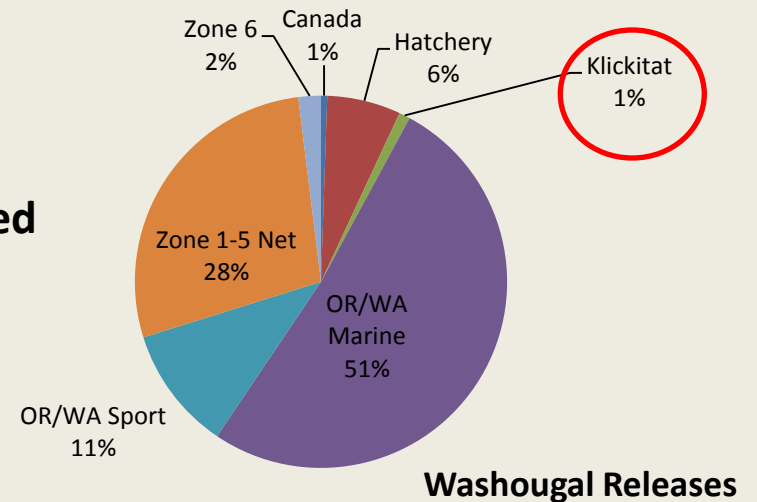
- Geometric mean of about 19,000 fish annually
- Conf. int. ~13,000 to 21,000
- About 52/48% split Klickitat versus direct release



Where are they caught?



RMIS-derived estimates



Klickitat River Hatchery Reform Proposed Changes to Coho Program

1.0m yearling release from Wahkiacus

1.5m direct release

Both programs use Washougal stock

Why?

- **Prioritize SpCh at KH (space/water)**
- **Science Review (concerns for NO fish)**
- **Sandy case threats**

