

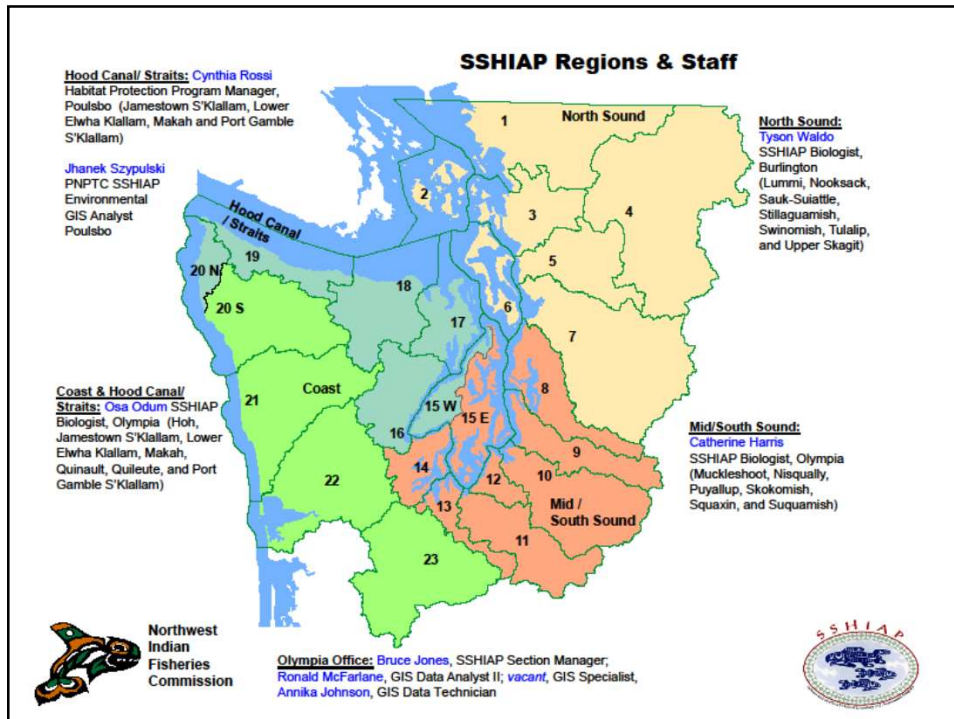
Salmon and Steelhead Habitat Inventory and Assessment Program

SSHIAP Goal:

To advance the understanding of fish and wildlife habitat by providing an information management and analysis program with the capability to assemble, synthesize, and deliver detailed and fundamental environmental information.



3



4

Salmon & Steelhead Inventory Assessment Program (SSHAP)

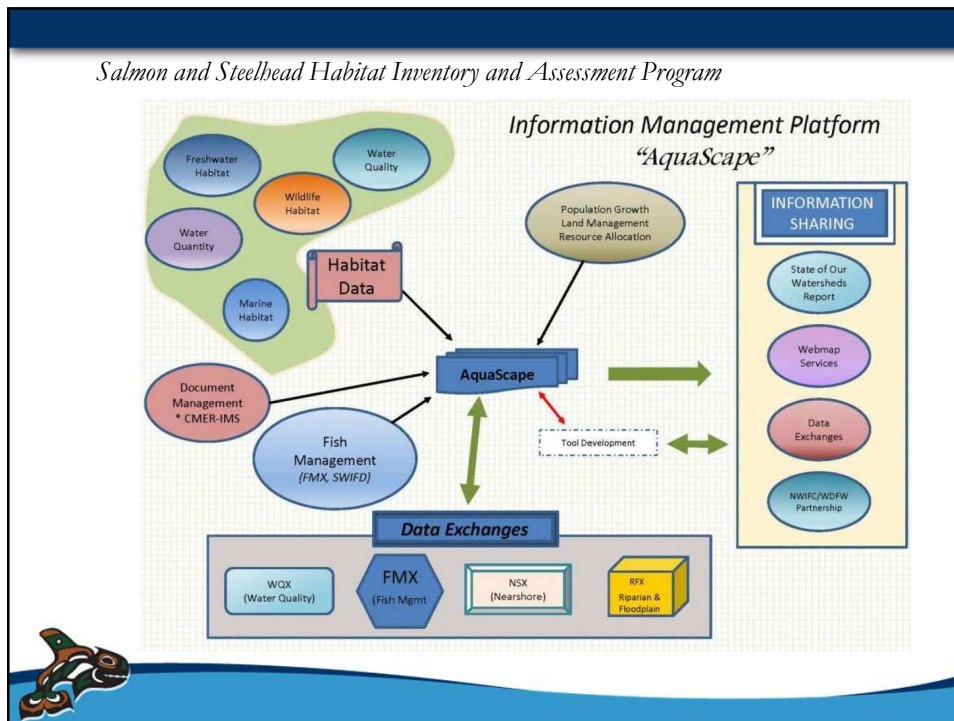
Data Management & Sharing

Tribal/State Cooperation

Information Sharing

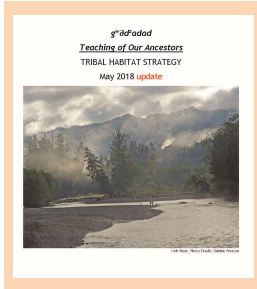
Capacity Building

5



6

Northwest Indian Fisheries Commission
Salmon and Steelhead Habitat Inventory and Assessment Program
'SSHIAF'



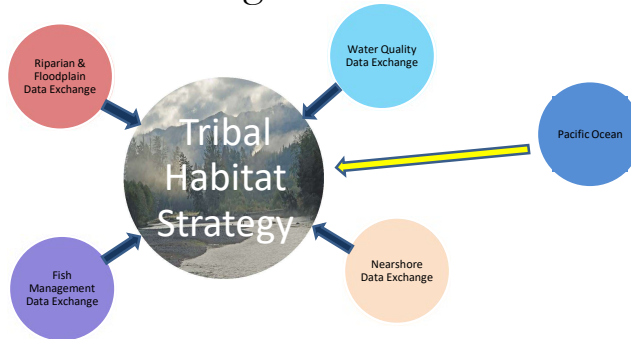
Tribal Habitat Strategy
& the
Information Management Platform

<https://nwtreatytribes.org/habitatstrategy/>



7

Tribal Habitat Strategy
Information Management Platform



8



Northwest Indian Fisheries Commission

**A special thanks
to the EPA and the Exchange Network Program
for project funding and support over the past 15 years**

And

**A special thanks to Windsor Solutions, Inc.
for their technical guidance and support throughout
the project**



9

*The Salmon and Steelhead Habitat Inventory and Assessment Program
Northwest Indian Fisheries Commission*

Data Exchanges

Water Quality (WQX)

Nearshore (NSX)

Juvenile Migrant (JMX)

Adult Fish – (AFX-SGS)

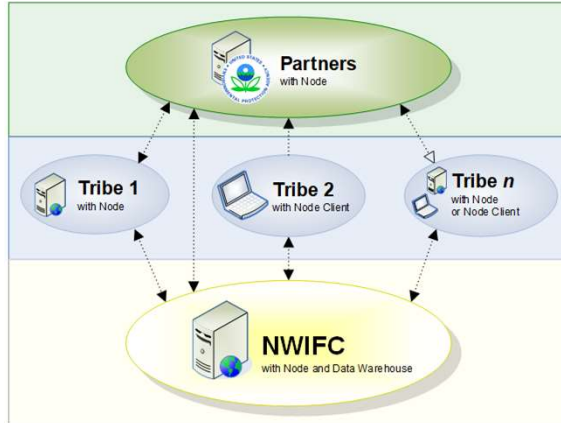
Fish Management (FMX)

Riparian & Floodplain (RFX)



10

How Data Flows



11

Data Exchange Components

Client

SQL Database

Bulk Import Template

Bulk Import App

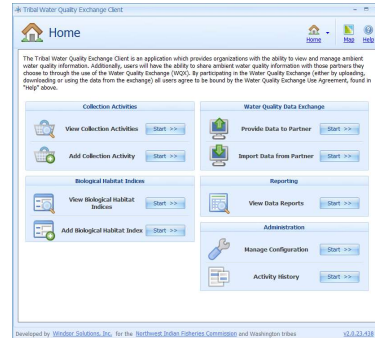
Water Quality Time Series Database (WQTS)
(For working with the Tribal Water Quality Database (TWQD))

To be released soon.

12



TWQD/WQX Data Exchange



In Production: 2009



13

Tribal Water Quality Data Exchange

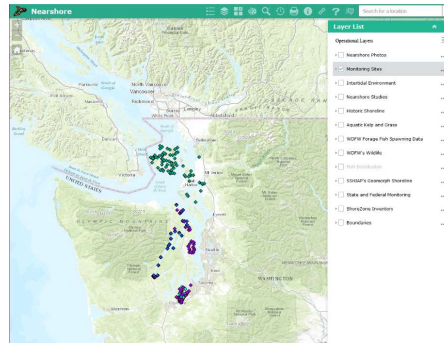
TWQD/WQX Deployment Progress:

- 16 of the NWIFC Tribes (4 chose different platform)
- Non-Member Tribes/Organizations (11):
 - Redwood Valley Little River Bank of Pomo Indians, California
 - Seldovia Village Tribe, Alaska
 - United South & Eastern Tribes, Inc., Tennessee
 - Lac Courte Oreilles Band of Lake Superior Chippewa Indians, Wisconsin
 - St. Croix Chippewa Indians of Wisconsin
 - Washoe Tribe of Nevada & California
 - Porch Band of Creek Indians, Alabama
 - The Eastern Band of Cherokee Indians of North Carolina, North Carolina
 - Samish Indian Tribe, Washington
 - Snoqualmie Tribe, Washington
 - Shoalwater Bay Tribe, Washington

14

Northwest Indian Fisheries Commission

Nearshore Data Exchange



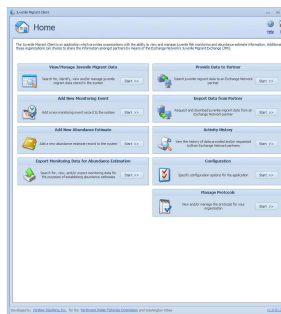
In Production: 2013



15

Northwest Indian Fisheries Commission

Juvenile Migrant Data Exchange



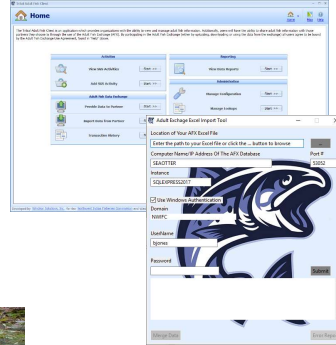
In Production: 2012
RCO/WDFW Partnership



16

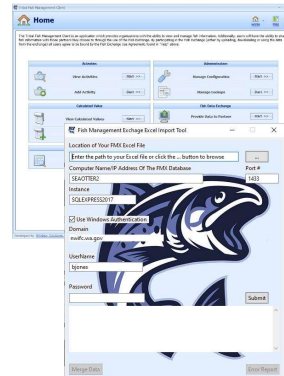
Adult Fish Data Exchange

In Production: 2019
RCO/WDFW Partnership



Fish Management Data Exchange

In Production: 2021
RCO/WDFW Partnership

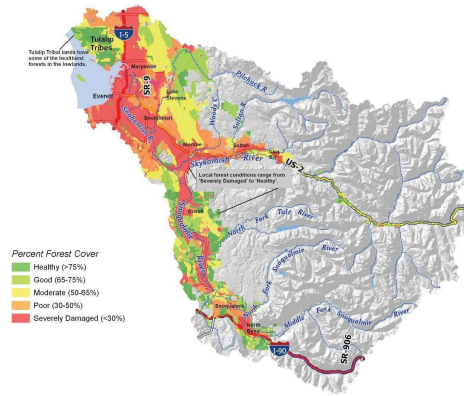


Northwest Indian Fisheries Commission



Riparian & Floodplain Data Exchange

In Production: 2022



RCO/WDFW Partnership

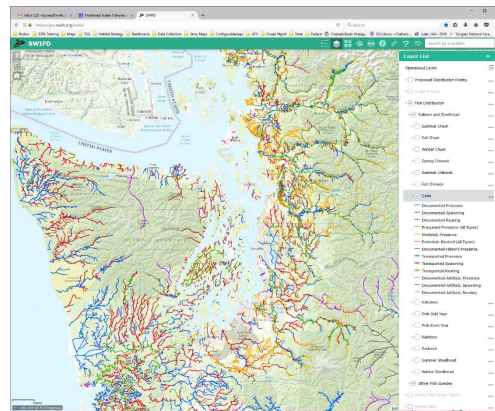
Goal:
To consolidate the fish distribution data in western Washington and develop a future management process of collaboration and joint management.

Funding: EPA Exchange Network Grant 2011

Project Completed 2013

Status: Is currently the source of co-manager's fish distribution for Washington.

SWIFD
Statewide Washington Integrated Fish Distribution



<https://geo.nwifc.org/swifd/>



TXG
TRIBAL EXCHANGE NETWORK GROUP

Empowering Tribal Environmental Professionals through data.

Supporting education and innovation for Tribal Environmental Departments.

[Our Values](#)

The Tribal Exchange Network Group's (TXG) mission is to support tribal management, analysis, and planning of environmental data, which can be used to enhance tribal research, promote tribal history, respect cultural integrity, and enhance tribal members' quality of life. And best of all, all of TXG's services are FREE for you and your tribe.

<http://www.tribalexchangenetwork.org>

21



RESOURCES & CONTACTS

TXG
TRIBAL EXCHANGE NETWORK GROUP

txg@tribalexchangenetwork.org | tribalexchangenetwork.org

INSTITUTE for TRIBAL ENVIRONMENTAL PROFESSIONALS
NAU.edu/ITEP
Ashley.Gries@nau.edu

Environmental Information
exchange Network
ExchangeNetwork.net

UNITED STATES ENVIRONMENTAL PROTECTION AGENCY
EPA.gov/exchangenetwork

22

Contact Information



Bruce Jones
SSHIAP Section Manager
Northwest Indian Fisheries Commission
bjones@nwifc.org
Office: 360-438-1180, ext 369
Cell: 360-481-9068

